





As water and wastewater experts, our Allworld team addresses challenges while positioning communities for the future.

Allworld has proven skills in the water and wastewater industry. Our experiences have addressed challenges related to aging wastewater treatment plants along with waning stormwater and sewer water drainage systems. We have managed design and installation projects related to small and large diameter pipes, which have significantly improved water transmission and distribution for municipalities across the southeastern region. Additionally, Allworld has participated in programs specifically formed to reduce sanitary sewer overflows caused by high rates of inflow and infiltration. Furthermore, we have managed innovative assessment and construction activities to save our clients time and money while also mitigating the risks of negative environmental effects over overflows.

With environmental sustainability in mind and thoughtful planning at hand, we put our solutions-oriented approach to work for you.

Core Services



Program Management



Asset Management



Water + Wastewater Collection + Conveyance



Wastewater Treatment Plans



Water + Wastewater System Mapping



Sewer System Rehabilitation



Stormwater Analysis + Modeling



GIS (Geographic Information Systems) Integration



Information Management Systems (IMS) Integration



Federal, State and Local Compliance



Biosolids Master Planning



Custom Pumping Systems + Conveyance



Stormwater Treatment

Industries Served

- State / Federal Government Agencies
- Local Municipalities
- Architectural, Engineering and Industrial Technical Firms
- Construction and Development Companies
- Sustainability and Green Tech Businesses
- Professional Services

Examples of Project Profiles

- Birmingham Waterworks
- City of Memphis Stormwater Modeling Projects
- City of Vicksburg Asset Management
- Meridian Consent Decree
- Memphis Sewer Assessment + Rehabilitation Project (SARP10)
- Memphis Stormwater Program (MSQ2)

Birmingham Water Works

LOCATION: Birmingham, AL

CLIENT: Gresham Smith & Partners (GS&P)

PROJECT VALUE: \$200 Million+



PROJECT DESCRIPTION

The Birmingham Water Works Board underwent several waterline infrastructure improvement projects that consisted of installing and replacing over 15,000 linear feet of new water pipelines for various areas in the City of Birmingham.

OUR ROLE

2016-PRESENT

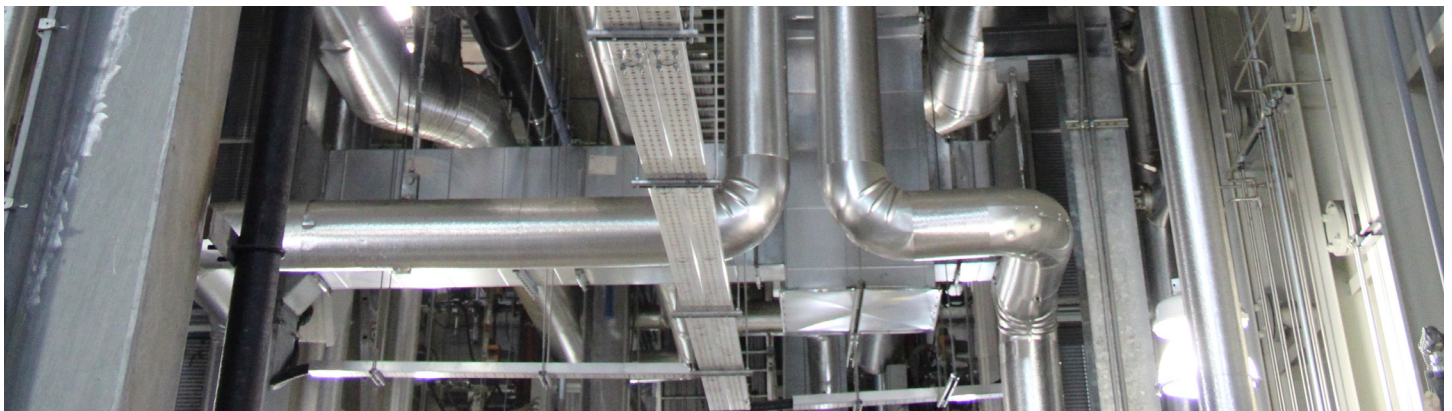
Allworld supported GS&P and provided engineering services for the design phase, bid award process, and construction phase, including furnishing a resident project representative to track and monitor construction. Allworld also supported the project by field verification of utilities shown on surveyor drawings, development of specifications (front and back-in documents), and QC of plans. Allworld also performed and submitted a substantial and final completion walk-through/punch list to GS&P.

WATER LINE REPLACEMENT PROJECTS:

Cliff Road/33RD Street South Water Main Replacement

Wesley Avenue/23RD Street Southwest Water Main Replacement

Broad Avenue R Ensley And Area Pipeline Replacement



City of Memphis Stormwater Mapping and Modeling Projects

LOCATION: Memphis, TN

CLIENT: Various engineering firms



PROJECT DESCRIPTION

The City of Memphis embarked on a stormwater program to alleviate flood-related issues and outlined a program structure similar to the 10-year Sewer Assessment and Rehabilitation Program (commonly referred to as SARP10). In 2019 the City issued an RFQ for stormwater program manager (SWPM) services. After submittals, evaluations, and interviews, Allworld Project Management was selected and awarded a contract to lead the program. As an example, a summary of our work on the Cane Creek modeling effort is provided below:

CANE CREEK WATERSHED

The Cane Creek Watershed has a total drainage area of 5,110 acres. For the hydrologic component of the modeling, Cane Creek Watershed was divided into 297 sub-basins using the Digital Elevation Model (DEM) from 2012 Shelby County LiDAR data. Initially, the sub-basins were delineated with a minimum size of 100 acres. InfoSWMM was integrated with ArcGIS and used to simulate and predict existing and proposed conditions for effective management of urban storm water systems for both existing and proposed conditions. The results of the model were used to identify locations of existing condition flooding and to identify appropriate capital improvement projects (CIPs) to address existing flooding problems.

OUR ROLE

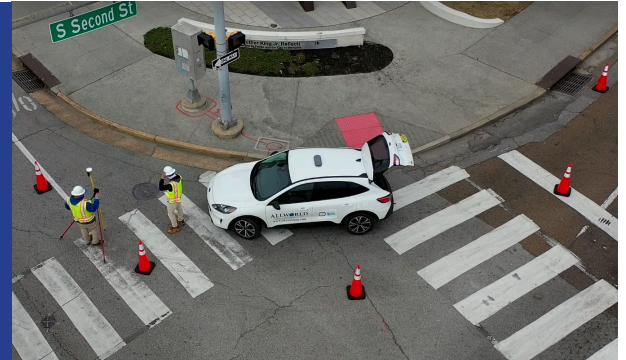
2015-2021

AWPM participated extensively in the effort to study and plan improvements to the City's stormwater infrastructure. Of the 21 studies awarded, Allworld has participated in 7 studies. These stormwater modeling projects include significant data collection and verification, GIS development, and stormwater modeling in a SWMM modeling environment (via InfoSWMM).

City of Vicksburg Asset Management

LOCATION: Vicksburg, MS

CLIENT: Allen and Hoshall



PROJECT DESCRIPTION

Allworld Project Management (AWPM) assisted the City of Vicksburg with GIS project management in compliance with a Consent Decree negotiated with the Environmental Protection Agency. AWPM assisted in managing land assets to ensure that land usage complied with the City's zoning regulations and met the needs of Vicksburg and its citizens.

OUR ROLE

2014-PRESENT

AWPM played a key role during the planning and preparation phases by leading the team in several asset management efforts, such as:

- Evaluated existing GIS data maintained by the City of Vicksburg
- Field verified conflicting information and updated data accordingly
- Migrated schemes to a local government standard
- Identified sanitary sewer overflow-sensitive areas
- Calculated quantities for establishing 10% required goals per year, including capital improvement projects, planning, and implementation

During the CSAP phase, AWPM managed data integration and ETL processes for collecting the manhole, pipe, and lateral assessments (MACP, PACP, LACP) and other field inspection activities.



Meridian Consent Decree

LOCATION: Meridian, MS

CLIENT: Neel-Schaffer Engineering

PROJECT VALUE: \$126 Million



PROJECT DESCRIPTION

The City of Meridian, MS entered into a Consent Decree with the United States Environmental Protection Agency (EPA), the United States Department of Justice (DOJ), and the State of Mississippi Department of Environmental Quality to address deficiencies within the City's wastewater collection and transmission systems. As a result, Meridian has embarked on a 20+ year, \$126 million program with the goal of eliminating sanitary sewer overflows (SSOs) and achieving and maintaining full compliance with the Clean Water Act (CWA), the Mississippi Air and Water Pollution Control Law, Mississippi, and the National Pollutant Discharge Elimination System (NPDES) Permits.

OUR ROLE

2019-PRESENT

Allworld Project Management (AWPM) supports two of the nine programs: Sewer Mapping and Information Management Systems (IMS).

Sewer Mapping Program contributions include:

- Co-development of Sewer Program CMOM document
- Development of Geographic Information Systems (GIS) data schema, geodatabase, and corresponding data dictionary
- Data compilation
- Creation of mapping documents
- Web applications using Esri ArcGIS software

Information Management Systems Program contributions include:

- Development of IMS Program CMOM document
- Support of City of Meridian's exploration and selection of IMS system
- Implementation, customization, and training for IMS system software

Memphis Sewer Assessment & Rehabilitation Program (SARPI0)

LOCATION: Memphis, TN

CLIENT: Black & Veatch

PROJECT VALUE: \$250 Million



PROJECT DESCRIPTION

The Memphis Sewer Assessment & Rehabilitation Program (SARPI0) is a City of Memphis-led program designed to minimize sanitary sewer overflows (SSO), assess and improve the City's waste-water collection and conveyance system, a nearly 3,000-mile network of underground pipes and force mains.

OUR ROLE

2013-PRESENT

AWPM is responsible for daily management and oversight of field activities; which involves many contractors and subcontractors collecting condition assessment data. This effort includes on-site representation and inspection of field activities, office-based planning and reviews, GIS-based tracking of assessment activities, regular contractor meetings, and coordination with local agencies to minimize potential conflict or community concerns.

AWPM manages the GIS resources and system for the program. This effort includes reviewing large amounts of data generated from the field assessment activities, including reviewing every CCTV video to verify the NASSCO-based rating systems are being applied properly and performing QA/QC checks on the system data received from the assessment contractors.

AWPM plays a major role in the program's planning and implementation of engineering-related work. This effort includes evaluating the information generated from the field activities and working with the program team to develop recommendations for future construction activities. AWPM staff also manages and facilitates the design and construction activities, including oversight and review of design activities and coordination of easements and permitting concerns.

Lastly, AWPM manages the loan and grant application processes for the program. This effort includes coordinating between the City, program, and appropriate government entities.

Memphis Stormwater Program (MSQ2)

LOCATION: Memphis, TN

CLIENT: City of Memphis

PROJECT VALUE: \$21 Million



PROJECT DESCRIPTION

The primary focus of the MSQ2 Program is to address flooding issues in the City of Memphis. The approach is to proactively identify areas at risk of flooding and find ways to mitigate those risks.

OUR ROLE

2019-PRESENT

As program manager, AWPM is responsible for completing all of the program elements, including planning, administration, finance, construction management, engineering, GIS and data management, and public relations communications.

Allworld performs the following scope of work for the program:

- The review and approval of construction bids, construction schedules, and shop drawings
- Performance of field observation and reporting, perform construction inspections, and the review and approval of construction payments.
- Assisting City staff with the integration of stormwater projects into the City's GIS data
- Providing asset management services, including asset inventory, mapping, and condition assessment
- Tracking, monitoring, and reporting on project progression and program budget; developing strategies to control the cost of all design, management, and construction costs.
- Providing design management services to include: consultant selection, assistance, scope review, drawing reviews, value engineering, constructability reviews, schedule adherence, and invoice processing.
- Assisting with public outreach material and meetings to inform external stakeholders of the requirements, goals, construction opportunities, costs, and merits of the stormwater program.
- Serving as a technical resource to the City and facilitating interface with the appropriate regulatory agencies as requested.